

### EV Charger

AC EV chargers can provide convenient and safe home charging to individual user. DC EV chargers are installed in charging station for fast and safe charging of electric vehicle.



 国标系列 Chinese standard(GB)	 国标交流车辆端 GB/T AC Charger for vehicle Voltage&Current 250V/440V 16A/32A Resistance $\geq 5M\Omega$ $\leq 0.05m\Omega$ IP Class IP55	 国标交流供电端 GB/T AC Charger for power supply Voltage&Current 250V/440V 16A/32A Resistance $\geq 5M\Omega$ $\leq 0.05m\Omega$ IP Class IP55	 国标直流车辆端 GB/T DC Charger for vehicle Voltage&Current 750V/1000V 125A/250A Resistance $\geq 5M\Omega$ $\leq 0.05m\Omega$ IP Class IP55	 国标交流供电插座 GB/T AC Supply Socket Voltage&Current 250V 16A / 32A Resistance $\geq 5M\Omega$ $\leq 0.05m\Omega$ NEMA IP55
 欧标系列 European standard	 欧标交流车辆端 Type 2 AC Charger for vehicle Voltage&Current 250V/440V 16A/32A Resistance $\geq 5M\Omega$ $\leq 0.05m\Omega$ IP Class IP55	 欧标交流供电端 Type 2 AC Charger for power supply Voltage&Current 250V/440V 16A/32A Resistance $\geq 5M\Omega$ $\leq 0.05m\Omega$ IP Class IP55	 欧标交流供电插座 Type 2 AC Socket-Outlet Voltage&Current 250V/480V 16A/32A Resistance $\geq 5M\Omega$ 500V DC 1min IP Class IP54	 欧标车辆端空座 Type 2 AC EV-Park Inflammability class UL94V-0
 美标系列 American standard	 美标交流车辆端 Type 1 AC Charger for vehicle Voltage&Current 250V 16A 32A 40A Resistance $\geq 5M\Omega$ $\leq 0.05m\Omega$ NEMA 3S	 美标车辆端空座 Type 1 AC EV-Park Inflammability class UL94V-0	 美标车辆端空座 Type 1 AC EV-Park Inflammability class UL94V-0	

具体产品信息请见 [www.degson.com](http://www.degson.com)

### Relay/Interface module

Relay module and interface module are used as basic control, connection components. small size, high power, fast and tidy connection. It is widely used in Automatic Machine, PLC Control Cabinet, Servo System, Mechatronics and Power Electronic Equipment.



### Magnetic valve connectors

Magnetic valve connectors are safe, reliable and practical products. According to the pipeline, hydrodynamic, pressure, electrical parameters, mode of action and special requirements to choose products model, built-in circuit protection and LED indicators. Can meet the different customers needs. Widely used in hydraulic valves, pneumatic valves, pressure switches, robot systems, sensors and so on.



具体产品信息请见 [www.degson.com](http://www.degson.com)

### Customer-specific electronics

DEGSON has a comprehensive, integrated platform that provides customers with customized solutions.



### Cable harness

Cable harness series are diversified, suitable for different environments, providing different transmission specifications for signals and currents, and anti-corrosion, anti-interference, high flexibility cables can be customized. It is widely used in industrial control, new energy, automotive and other industries.



具体产品信息请见 [www.degson.com](http://www.degson.com)

DEGSON is a professional industrial connector manufacturer that offers customized solutions to customers.

**DEGSON** Terminal Block

DEGSON ELECTRONICS CO.,LTD.  
 ISO9001 ISO14001 ISO80079-34 IATF16949 REACH RoHS CE CCC ENEC

**DEGSON** Circular Connectors

DEGSON ELECTRONICS CO.,LTD.  
 ISO9001 ISO14001 ISO80079-34 IATF16949 REACH RoHS CE CCC ENEC

**DEGSON** Heavy Duty Connector

DEGSON ELECTRONICS CO.,LTD.  
 ISO9001 ISO14001 ISO80079-34 IATF16949 REACH RoHS CE CCC ENEC

**DEGSON** EV Charging Cable

NINGBO GAOSONG NEW ENERGY TECHNOLOGY CO.,LTD.  
 IATF16949 REACH RoHS CE CCC ENEC

**DEGSON** Cable harness

DEGSON ELECTRONICS CO.,LTD.  
 ISO9001 ISO14001 ISO80079-34 IATF16949 REACH RoHS CE CCC ENEC

**DEGSON** Customized Product

DEGSON ELECTRONICS CO.,LTD.  
 ISO9001 ISO14001 ISO80079-34 IATF16949 REACH RoHS CE CCC ENEC

**DEGSON**  
 DEGSON ELECTRONICS CO.,LTD.

Add : No.1585.Xiaolin Road.Cixi.Ningbo China Tel : +86-574-63504333  
 P.C : 315321 Fax : +86-574-63512345  
[www.degson.com](http://www.degson.com) E-mail : sale@degson.com



DEGSON website DEGSON WeChat official account

PO 21-GE01

### Product Overview



DEGSON ELECTRONICS CO.,LTD.  
 ISO9001 ISO14001 ISO80079-34 IATF16949 REACH RoHS CE CCC ENEC

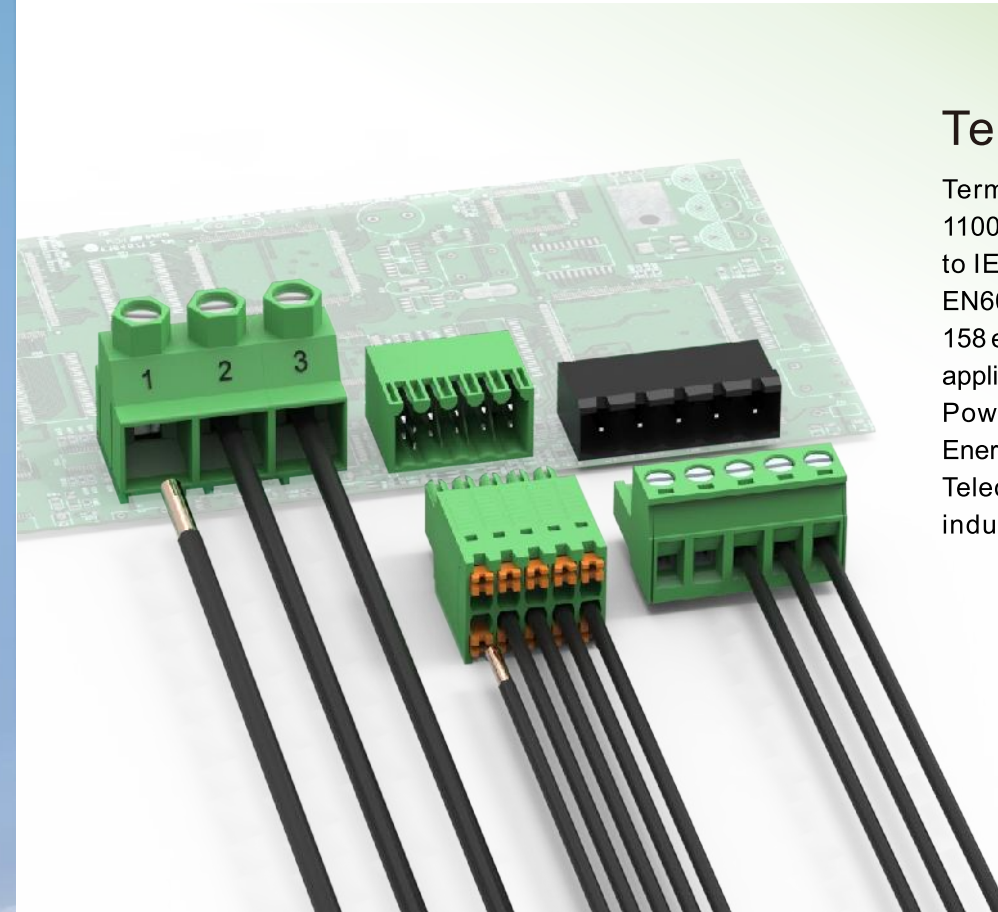
## Brief Introduction

Founded in 1990, DEGSON is a global solution provider of electrical, electronic and industrial connectors. As a National High-tech enterprise, DEGSON owns the UL and VDE certified laboratory. The company achieved ISO9001, ISO14001, ISO80079-34, ISO/TS22163 and IATF16949 management system certifications.

DEGSON is engaged in supplying highly reliable and durable products to serve global customers. The company has a market-leading capability of mould processing, automatic manufacturing and advanced testing. DEGSON has the complete engineering ability to support global customers with the professional customization solution and value-added service.

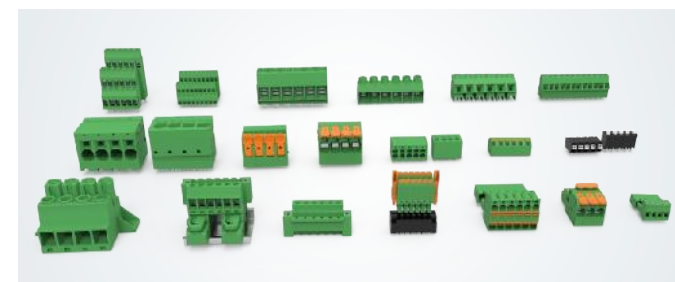
DEGSON products are widely recognized in China, the USA, Germany, the UK, Italy, Spain, Turkey, Russia, Japan, South Korea, Singapore, etc. totally hundred countries and regions. DEGSON supply high quality products and provide professional services globally in the industry sectors likely industrial automation, instrument, electric power, railway, marine and offshore, new energy, elevator, lighting, security, machinery, etc. The company won the recognition from partners among Fortune 500 and industry leading enterprises.

Based on the business philosophy of "pragmatic innovation, responsibility, integrity, harmonious development, regulation and win-win", DEGSON continuously integrates professional technical resources, R&D innovation, product manufacturing and technology application capabilities. Relying on global sales network, DEGSON aims to supply series of multiple varieties of high-quality products and services. We provide global customers with professional and quick connected application solutions, help customers continue to create value. DEGSON is making contributions to creating a smart and interconnected world.



### Terminal Blocks

Terminal blocks, 10 types, more than 11000 specifications. Products conform to IEC/EN61984, IEC/EN60998, IEC/EN60947-7-4, UL1059, CSA C22.2 NO. 158 etc. International standards. Widely applied in Industrial automation, Electric Power, Elevator, Rail Transport, New Energy, Security, Lighting, Power Supply, Telecommunication, and Ship-building industries etc.

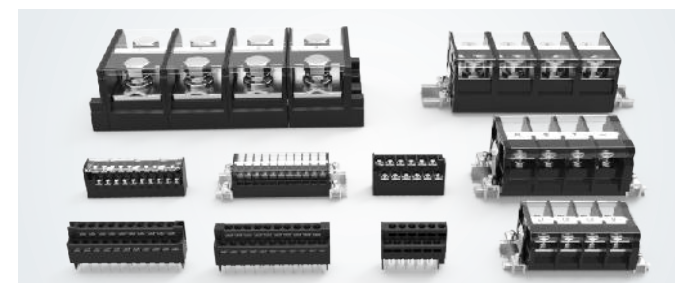


#### PCB式接线端子

可以连接截面为0.08mm<sup>2</sup>至35mm<sup>2</sup>的所有类型的导线，间距2.5mm至20mm可供选择，可根据需要选择进线方向，连接方向，插拔方向。

#### PCB terminal blocks

Wire cross-section ranges from 0.08mm<sup>2</sup> to 35mm<sup>2</sup>, pitches range from 2.5mm to 20mm, according to customer requirements. Wire insertion direction, connection direction, insertion and removal direction are optional.

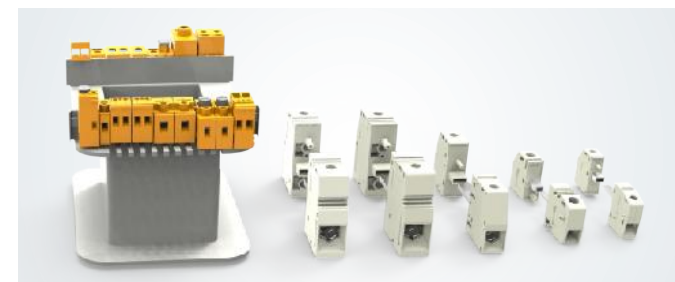


#### 栅栏式接线端子

接线直观明了，可以连接截面为0.5mm<sup>2</sup>至300mm<sup>2</sup>的所有类型的导线，间距6.35-60mm可供选择，可提供有盖、无盖等款式。

#### Barrier terminal blocks

Straightforward connection and wire cross-section range from 0.5mm<sup>2</sup> to 300 mm<sup>2</sup>. Pitches range from 6.35 mm to 60mm, cover are optional.



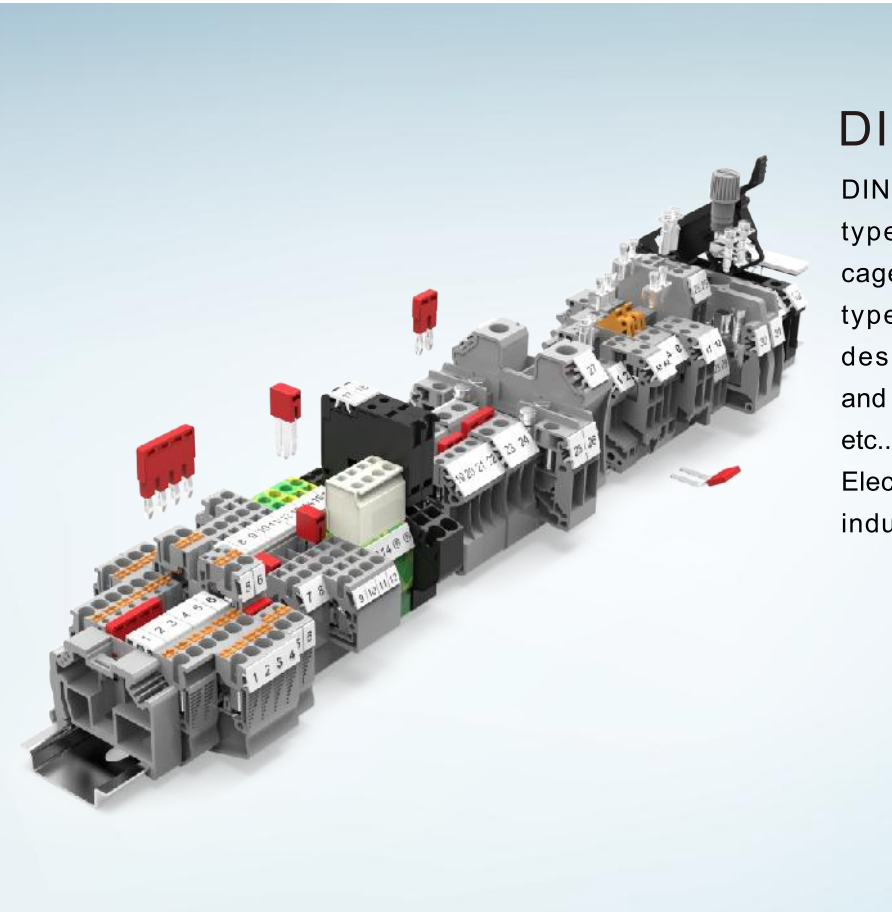
#### 变压器 穿墙式接线端子

变压器接线端子，结构设计兼顾了接线方便，螺钉连接牢固的特点，可以快速方便的安装在2x10mm的导轨上。穿墙式接线端子，结构设计兼顾了接线方便，螺钉连接牢固的特点，可以连接截面为0.2mm<sup>2</sup>-95mm<sup>2</sup>的所有类型的导线。

#### Transformer / Through wall terminal blocks

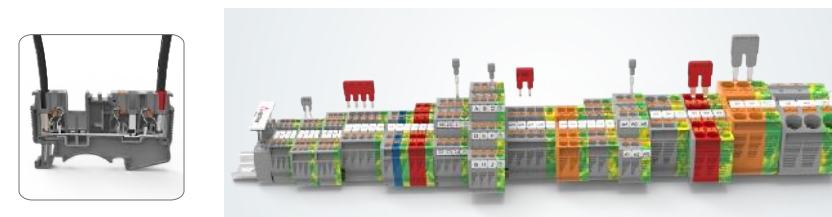
Transformer terminal blocks, screw connection design, firm and easy connection. Quick and easy installation on 2x10mm rails. Through-wall terminal blocks, screw type, easy and firm connection. Wire cross-sections ranges from 0.2mm<sup>2</sup> to 95mm<sup>2</sup>.

具体产品信息请见 [www.degson.com](http://www.degson.com)



### DIN Rail Series

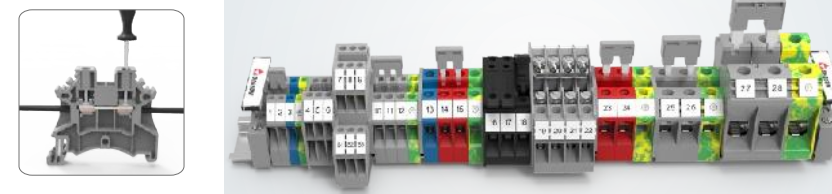
DIN rail products have DS, DC, WS and PC type, totally 4 series. Push-in type, Steel cage type, cage clamp type and brass cage type connections are available, products design conform to IEC/EN60947, UL1059 and CSA C22.2 NO.158 International standard etc.. It is widely applied in Industrial Automation, Electric Power, Rail Transport and New Energy industry etc..



#### DS系列

采用镍铬不锈钢弹簧，耐腐蚀性能最佳。抗震动，防松动，免维护。插入式弹簧结构，快速接线。接线范围0.2-16mm<sup>2</sup>。

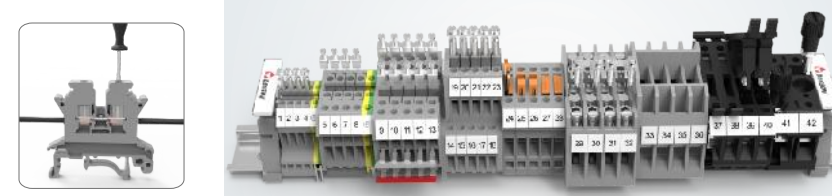
**DS series**  
With nickel-chromium stainless steel springs, excellent corrosion resistance. Anti-vibration, Anti-loose, maintenance-free. Push-in connection for fast wiring. Wire cross-section range from 0.2mm<sup>2</sup> to 16mm<sup>2</sup>.



#### DC系列

钢制压线框结构，接触压力大，导电电镀锌合金，确保最低的接触电阻和良好的气密性。压线框的挡线舌可以防止误插。接线范围从0.2mm<sup>2</sup>到35mm<sup>2</sup>。

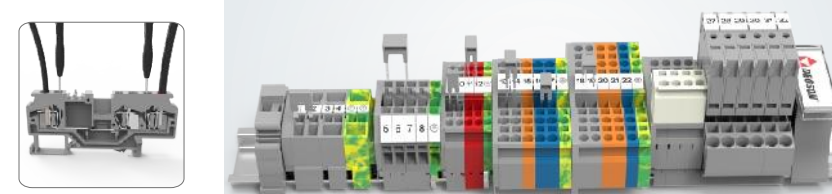
**DC series**  
Steel cage structure, excellent contact force, Sn plated copper alloy conductor to ensure low contact resistance and good air tightness. Wire range is from 0.2mm<sup>2</sup> to 35mm<sup>2</sup>.



#### PC系列

铜合金压线框结构，提供潮湿，盐雾等恶劣环境下的长期保护。接线范围0.2-95mm<sup>2</sup>，并提供试验型、开关型、熔断器型等多种功能端子，电压降小。

**PC series**  
Brass cage structure, suitable for harsh environments applications such as humid, salt mist. Wire range is from 0.2mm<sup>2</sup> to 95mm<sup>2</sup>. Fuse type and other functional terminal blocks are available, low voltage drop.



#### WS系列

适用于单股导线，多股导线和细多股导线，同时也适用于加有冷压端子的细多股导线，或经过浸锡束束处理的细多股导线。其范围从0.2mm<sup>2</sup>到35mm<sup>2</sup>。

**WS series**  
Suitable for solid wire, stranded wire, fine-stranded wire, fine-stranded wire with ferrule or immersion-Tin wire. Wire range is from 0.2mm<sup>2</sup> to 35mm<sup>2</sup>.

具体产品信息请见 [www.degson.com](http://www.degson.com)



### Circular Connector

Circular connectors have a wide range of products. Adopt advanced technology to save more installation time. Molded case, high IP class, safe for on-site assembly, screw type, soldering type, crimping type and other connection methods are available. Shielded parts are optional to prevent signal interference, and can be used for data transmission of different facilities. It is suitable for general networks and field-bus.



#### M8系列

信号、数据传输连接器，设计紧凑，传输可靠，可造360度屏蔽连接。

#### M8 series

Signal, data transmission connector, compact design, reliable transmission and 360° shielded connection are optional.

额定电流 Rated current	额定电压 Rated voltage	插针数 Pins number
4A	60V	3, 4, 5, 6, 8 Pin



#### M12系列

信号、电源、数据传输连接器，带公制或PG螺母紧固，安装方法多样。

#### M12 series

Signal, power, data transmission connector, with metric or PG nut fastening, diversified installation methods.

额定电流 Rated current	额定电压 Rated voltage	插针数 Pins number
12A	630V	3, 4, 5, 6, 8, 10, 12, 17 Pin



#### M23系列

信号、电源传输连接器，设计紧凑，传输可靠，360度屏蔽连接。

#### M23 series

Signal, power, transmission connector, compact design, reliable transmission and 360° shielded connection.

额定电流 Rated current	额定电压 Rated voltage	插针数 Pins number
28A	600V	6, 7, 9, 12, 16, 17, 19 Pin



#### 推拉自锁

插拔快速方便，易于盲插，连接可靠防电磁干扰，抗振动、抗冲击性能好。

#### Push-pull self-locking

Quick and easy plug and unplug, easy for blind insertion, reliable connection to prevent electro-magnetic interference, excellent anti-vibration, anti-shock performance.

额定电流 Rated current	额定电压 Rated voltage	插针数 Pins number
30A	800V	2-26 Pin

具体产品信息请见 [www.degson.com](http://www.degson.com)



### Heavy Duty Connector

Heavy-duty connectors have screw type, crimp type, spring type and axial connection type products etc. It can meet electrical and signal connection in different fields and situations. It is mainly used for electrical and signal connection between different equipments and functional units. Rich combination methods can simplify the wiring difficulty and ensure the wiring accuracy even in complex applications.



#### DA/DQ紧凑型系列

体积小，结构紧凑，节约空间。

#### DA/DQ compact series

Small size, compact structure and save space.

额定电流 Rated current	额定电压 Rated voltage	插针数 Pins number
10A/16	250V/400V	1-32 Pin



#### DE/DEE标准型系列

多种连接方式，能适用于不同工况要求，便于安装和维护。

#### DE/DEE standard series

Multiple connection methods, can be used in different working conditions, easy to install and maintain.

额定电流 Rated current	额定电压 Rated voltage	插针数 Pins number
16A	500V	1-92 Pin



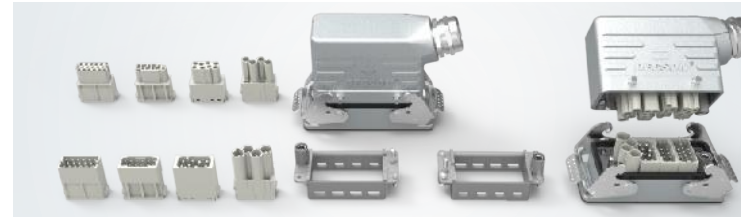
#### DD/DDD高密度型系列

提供高集成度连接，可实现大量及复杂电路预先安装，极大提高工作效率，节约安装成本。

#### DD/DDD high density series

Provide highly integrated connection, massive and complex circuits pre-installation are available, greatly improve work efficiency and reduce installation costs.

额定电流 Rated current	额定电压 Rated voltage	插针数 Pins number
10A/16	250V/400V	1-32 Pin



#### DK/DM组合型系列

模块化设计，丰富的组合方式，极大提高了空间有效利用率。

#### DK/DM combination series

Modular design and rich combination, greatly improve the utilization of space.

额定电流 Rated current	额定电压 Rated voltage	模块数 Module number
最大电流 200A maximum current 200A	最大电压 1000V Maximum voltage 1000V	12个模块 12 standard modules

具体产品信息请见 [www.degson.com](http://www.degson.com)