

DC NEW ENERGY CONNECTION SOLUTION

New Energy Through Wall Connector Solution

Power transmission



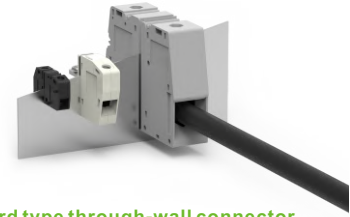
Barrier through-wall connector

Barrier screw connection technology can withstand high torque and ensure stable and reliable connection; Rotating transparent cover design has features of dust-proof and touch-proof for safe and efficient installation; The 40A-200A current can meet various equipments



Euro pluggable through-wall connector

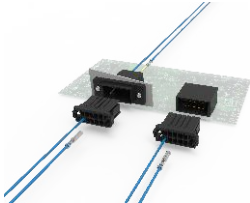
Plug-in through-wall structure provides convenient and easy installation, and save cost.; DLS double lever spring wiring technology could save time for tools free. Self-locking latch design, saves space and has excellent anti-vibration performance



Card type through-wall connector

Card type structure is more flexible in installation of panel in thickness from 1mm to 5mm.; The 32A-232A current range meets various equipments. The traditional screw connection technology is solid with large connection range and firm connection

Signal transmission



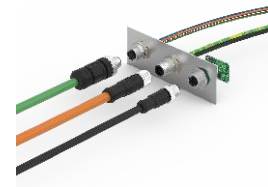
Crimp through-wall connector

Crimp connection technology with compact structure and automatic production available, which could save cost; The safety latch on both sides of the plug and the socket is more reliable and has excellent anti-vibration performance; Gold-plated contacts ensures low temperature rise, small contact resistance, and more stable electrical transmission



Screw/spring type through-wall connector

Screw/Push-in spring connection technologies available, meet various customers; Pluggable through-wall structure convenient maintenance and easy installation. Fully automated production ensures high efficiency and high quality



Through-wall circular connector

Optimized sealing with IP68; Flexible and optional front/rear mounting; Customization on cable length at the end of the panel socket according to requirements

Data transmission



Through-wall RJ45 network port connector

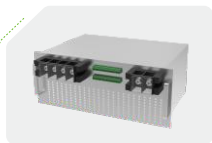
IP67 high protection level RJ45 network port connectors are reliable, durable and easy to install, Provide pack panel socket and communication connection between packs; The panel socket is equipped with dust-proof cap accessories, dust-proof



Through-wall communication connector

IP67 high protection level meets outdoor use conditions; Pre-assembled cables save on-site installation time for customers; Latches on both sides, easy and time-saving installation

Successful case



Power conversion system/barrier through-wall connector



Photovoltaic energy storage integrated machine/Card type through-wall connector



Energy storage cabinet - Screw/spring type through-wall connector



Energy storage PACK - Through-wall RJ45 connector



Energy storage cabinet - Euro pluggable through-wall connector



BMS crimp type through-wall connector

Positive Pole In Red And Negative Pole In Black With Two In And One-out Structure Can Provide Easy Parallel Connection For Residential Energy Storage Batteries

Product series



100A-01P



200A-02P

Application



Base station power supply



Residential energy storage

Product features

- The rotatable cover structure prevents the cover lost or assemble missing, easy operation
- Red and black are the main colors, the positive and negative poles are separated by color, marking free
- Barrier structure, sustain large torque, easy connection
- One-piece structure, less assembly process, fast delivery

Specification overview

Current specification	Voltage	Number of poles
100A	600V	01P~02P
200A		
Color	Screw specifications	Pitch
Red/Black	M6	42
	M8	54

Easy Connection Metal Parts

Product features



Easier operation

Easy and reliable screw connection



Easier processes

Molding products with no assembly, faster delivery and stable quality



Outstanding performance

Using high-quality copper material, with performance in durability and temperature resistance

Parameter

Molding processes	Material	Plating layer
Threaded nut/post-process rivet nut/one-piece molding	Brass/Copper	Tin
Current	Nut specification	Material thickness
15~350A	M3~M8	0.8~3.0mm

Application

Suitable for in-device connection scenarios in industries such as new energy and industrial automation etc



PV inverter



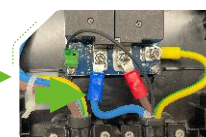
Layout on board



The best selling product



AC charging pile



Layout on board



The best selling product

ES-K-350 Energy Storage Battery System Through Wall Connector



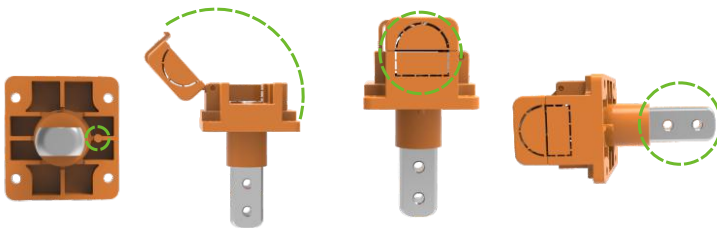
Product features

- The rotating cover design can effectively avoid the loss or
- The pre-break structure can be flexibly removed according to the
- Positive and negative poles error-prevention structure ensures correct in on-site installation
- Double screw thread connection can effectively increase the
- Two-way outlets can be used to connect energy storage batteries
- Low temperature rise; Safe ,economical and efficient connection

Product specifications

Rated voltage	1500V DC
Rated current	350A
Available wire cross section	3/0AWG (95mm ²)
Available copper bar specifications	20mm*5mm

Application



Error prevention on positive and negative pole

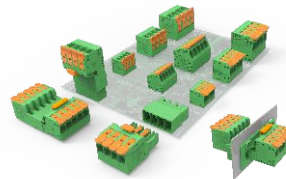
Rotatable over

Pre-break structure

Double screw thread connection



New Energy PCB Connection Solution; DLS Double Lever Spring Connection Technology



Product advantages



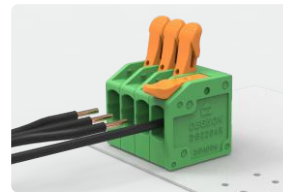
Save time

Compared with screw connection, the push-in connection with high wiring efficiency, could save nearly 75% wiring time



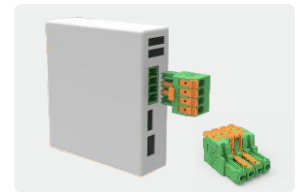
Labor-saving

Innovative DLS double lever spring patented technology. Easy, comfortable and labor-saving operation



Easy to operate

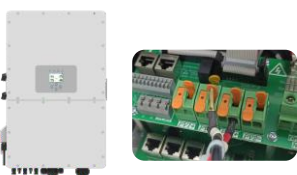
PCB terminal block with lever. Tools free for connect/disconnect wires, reducing the traditional wiring's dependence on professional tools and personnel



Space-saving

Self-locking latch design. Provide a more reliable connection between the plug and the socket without increasing the space on both sides

Successful case



PV inverter



Pitch drive



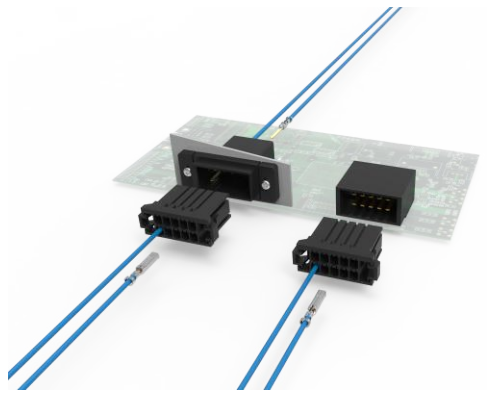
AC charging pile



Energy storage cabinet

SNAP-LOCK

Crimp Series Pluggable Connectors



Product features

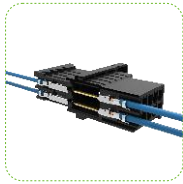
- Highly reliable crimp connection, suitable for high-efficiency automatic production of factory, reduced labour costs greatly
- SNAP-LOCK safety latch structure, more reliable connection between plugs and socket, with excellent vibration resistance performance
- Gold-plated contacts, low contact resistance and temperature rise, ensuring the stable electrical transmission
- The socket deploys a reinforced fixed pin design, capable of resisting the up-and-down movement caused by the cable, ensuring more secure attachment to the PCB



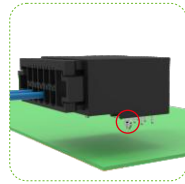
Crimp connection



SNAP-LOCK safety latch



Gold-plating process for contacts



Reinforced fixed pin

Application industries



New energy



Industrial robot



Industrial automation



Elevator control

Fighting Across IP Class Category, PCB Connector, the Invisible Player In High Protection Market

Three major advantages of high-protection terminal blocks

- Multiple connection methods
- Flexible number of cores
- Rich connectivity benefits

High-protection terminal blocks solution

High-protection signal solution



Plug

Socket

High-protection power supply solution



Plug

Socket

Application



Business scope: products ≈ enclosures



Board-to-wire



Wire-to-board



Board-to-board



Multiple protective casing options available (customized service)

Water And Fire Proof, 100m High Protection RJ45 Communication Connector



Product advantages

- Insert and rotate, easy and reliable operation
- Multiple options, straight and angled connectors can be flexibly combined
- RJ45 pin anti-yielding design, excellent contact even after 100 times of plugging and unplugging
- Passed the UL2238, vibration and shock resistance test, robust and reliable

Application

Suitable for communication transmission in photovoltaic, energy storage, industrial automation etc.



PV inverter



On-board layout (for industrial and commercial customer)



Energy storage system



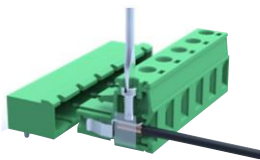
BMS communication (built-in battery module)

Model specification

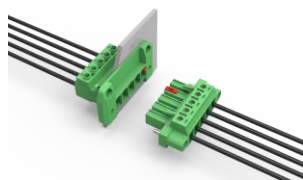
Rated current	1.5A
Rated voltage	125V
Insulation resistance	≥100MΩ
Contact resistance	≤5mΩ
Operating temperature	-40~ + 85°C
Insertion&pull-out times	100
Protection level (after mating)	IP67

Pluggable Energy Storage System Signal Connectors

Product series



Wire-to-board connection



Through-wall connection

Product features

- Over 70,000 specifications, covering over 90% of industry standard products, provide extensive options
- Automatic production, stock for standard products, high efficiency, fast delivery and good quality
- There are multiple connection methods, like safe and reliable screw connection, push-in connection that save 70% connection time and anti-vibration cage clamp connection, which could meet various applications use

Specification overview

Wiring method

- Screw connection
- Push-in connection
- Cage clamp connection

All series products pitches

- 2.5mm
- 3.5mm
- 3.81mm
- 5.0mm
- 7.5mm
- 7.62mm
- 10.0mm
- 10.16mm

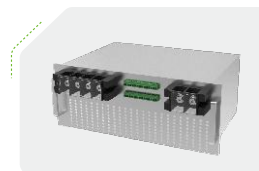
Application



BMS



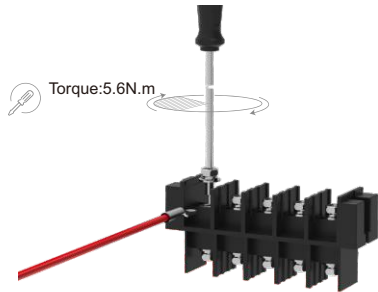
Energy storage cabinet



PCS

Barrier Through-wall Terminals Blocks,

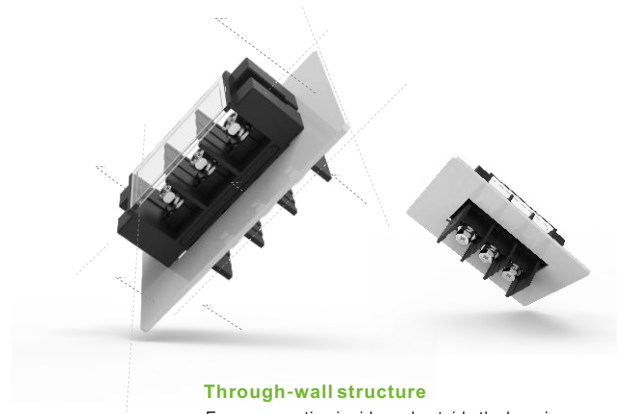
Product advantages



Torque: 5.6N.m

Barrier structure, screw connection

Locked with big torque, firm connection



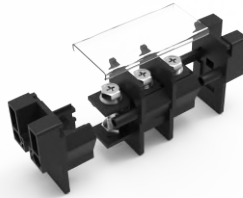
Through-wall structure

Easy connection inside and outside the housing



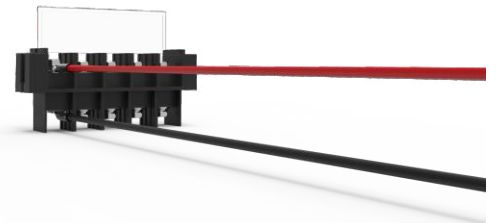
Flanged structure

Simple and firm connection, easy operation



Rotatable over

Leak-proof, dust-proof, and touch-proof design enhances both personnel and equipment safety, while also saving installation time for cover plates, resulting in improved efficiency



Suitable for high-power equipment

High current, high voltage, carrying high power
Maximum current: 200A
Maximum voltage: 1000V

Application



Applicable to

- Power conversion system
- Energy storage battery
- EV charger station
- Filter



DC NEW ENERGY CONNECTION SOLUTION



DEGSON website



LINKEDIN

DEGSON ELECTRICAL CO., LTD.

Add : No.1585.Xiaolin Road.Cixi.Ningbo China

P.C. : 315321

www.degson.com

Tel : +86-574-63510770

E-mail : sale@degson.com

The catalog is for reference purpose only and details are
base on company's specifications